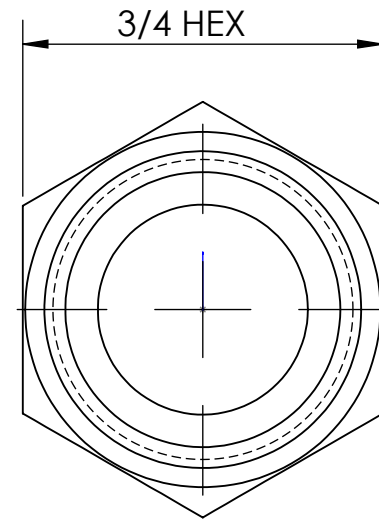
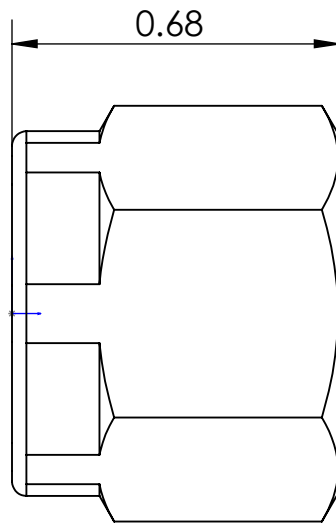
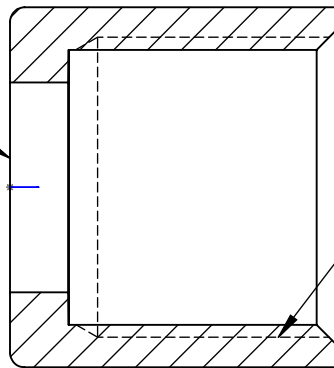


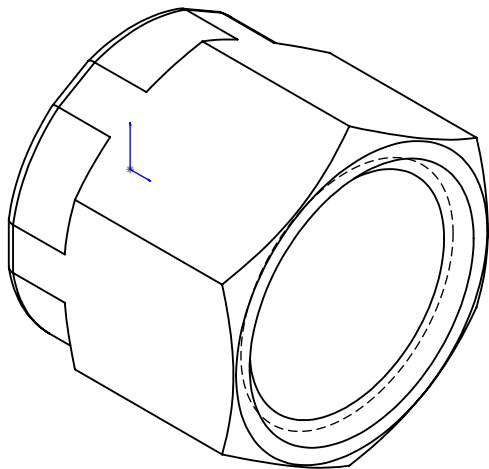
LINE DRAWING NOT FOR PRODUCTION PURPOSES




THRU HOLE DIA. 0.439
0.435



5/8 - 18 UNF-2B
THREAD



THIS DRAWING CONTAINS INFORMATION DEEMED PROPRIETARY TO DIXON BRASS AND IS SO TO BE USED ONLY FOR THE PURPOSE FOR WHICH IT IS SUBMITTED, AND FURTHER, SHALL NOT BE COPIED IN WHOLE OR IN PART WITHOUT EXPRESS WRITTEN PERMISSION FIRST OBTAINED FROM DIXON BRASS.			
UNLESS OTHERWISE SPECIFIED:		 Dixon Brass Westmont, Illinois USA	
DIMENSIONS ARE IN INCHES TOLERANCES: ANGLES: $\pm 0^{\circ}30'$.X ($\pm .015$) .XX ($\pm .010$) .XXX ($\pm .005$) DIMENSIONS PER ANSI Y14.5		DRAWN P. MONAGHAN APPROVED DATE 5/20/14	DATE 5/20/14 DATE
TITLE:		DRAWING NOT REPRODUCED TO SCALE	
SAE FEMALE SWIVEL NUT		SIZE A	DWG. NO. 1440410N REV A