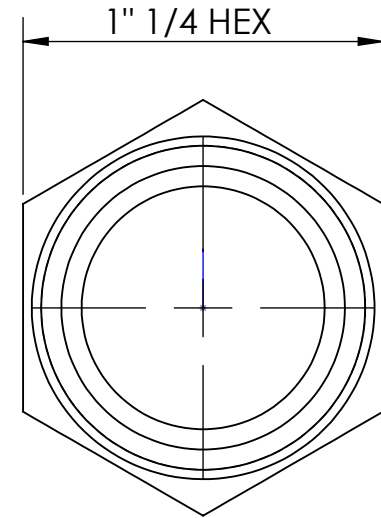
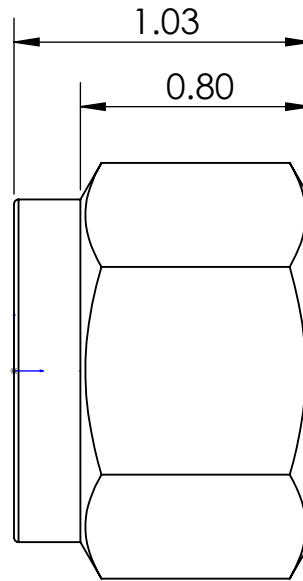
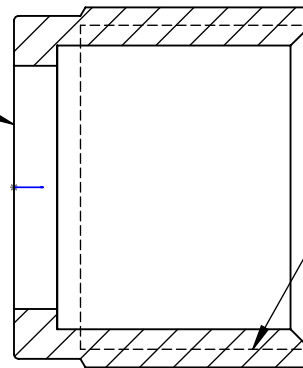


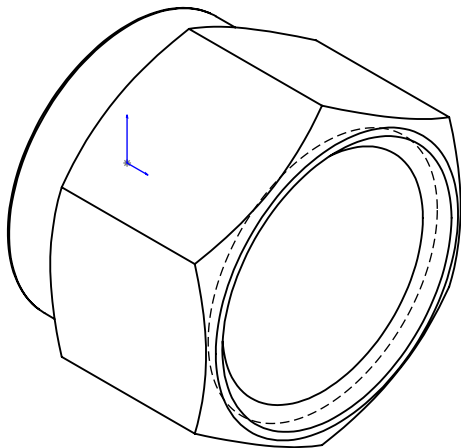
LINE DRAWING NOT FOR PRODUCTION PURPOSES




THRU HOLE DIA. 0.850
0.845



1" 1/16 - 12 UN 2B
THREAD



THIS DRAWING CONTAINS INFORMATION DEEMED PROPRIETARY TO DIXON BRASS AND IS SO TO BE USED ONLY FOR THE PURPOSE FOR WHICH IT IS SUBMITTED, AND FURTHER, SHALL NOT BE COPIED IN WHOLE OR IN PART WITHOUT EXPRESS WRITTEN PERMISSION FIRST OBTAINED FROM DIXON BRASS.				
UNLESS OTHERWISE SPECIFIED:		 Dixon Brass Westmont, Illinois USA	DRAWN P. MONAGHAN	DATE 6/16/14
DIMENSIONS ARE IN INCHES TOLERANCES: ANGLES: ±0°30' .X (±.015) .XX (±.010) .XXX (±.005) DIMENSIONS PER ANSI Y14.5			APPROVED	DATE
			ECO NO.	
TITLE: FEMALE SWIVEL NUT JIC 1" 1/16 - 12			SIZE A	DRAWING NOT REPRODUCED TO SCALE DWG. NO. 1451217N REV A